

**PUBLIC WORKS
DEPARTMENT**

Brian Edwards, PE
County Engineer

Jeremy Quist, PE & LSIT
Assistant County Engineer

Engineering and Road & Bridge
527-8520 or 754-8520



PARK COUNTY, WYOMING
ORGANIZED 1911

ORIGINAL PARK COUNTY COURTHOUSE
CODY, WYOMING
COMPLETED 1912

County of Park

PUBLIC NOTICE

To all to whom it may concern: The Board of County Commissioners of Park County have decided to vacate a portion of Viking Drive.

The Board has decided to vacate said Viking Drive located as described according to the attached Record of Survey, and by this mention made a part hereof.

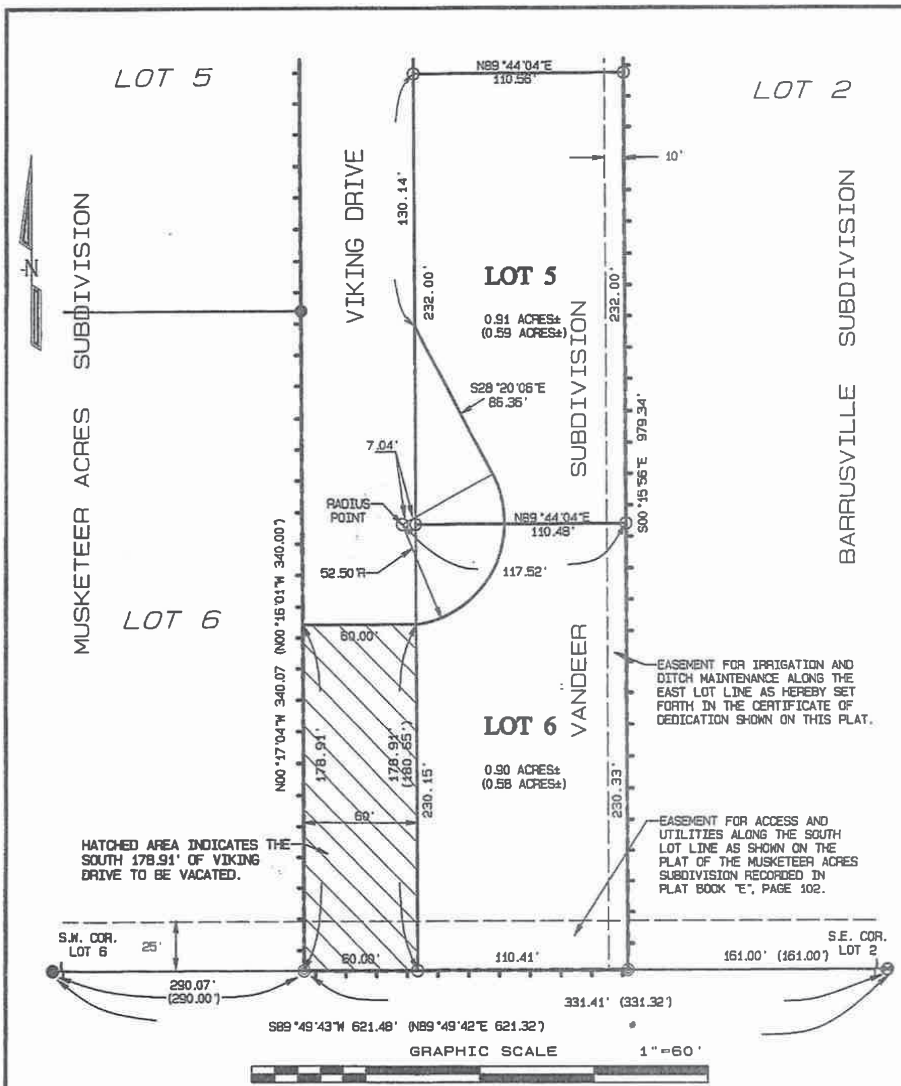
All objections thereto or claims for damages by reason thereof must be filed in writing with the County Clerk of said County, before noon on the 15th day of May, 2017 or such roads will be vacated without reference to such objections or claims for damages.

/s/ Colleen Renner
Park County Clerk

Dated: April 05, 2017

Run as Legal Ad, including full description attached as follows:

Park County Website



LEGEND

- INDICATES REBAR WITH 2" ALUM. CAP SET ——— ○
- INDICATES REBAR WITH ALUM. CAP FOUND ——— ●
- INDICATES BRASS CAP FOUND ——— ⊙
- INDICATES BRASS CAP SET ——— ⊙
- INDICATES EASEMENTS ——— - - - - -
- RECORD DIMENSIONS SHOWN THUS ——— ()
- BOUNDARY OF VADEER SUBDIVISION ——— + + + + +

CERTIFICATE OF SURVEYOR

STATE OF WYOMING) ss
 COUNTY OF PARK)
 I, RUSSELL B. BLOUGH ON BEHALF OF MORRISON MAIERLE, INC. OF CODY,
 WYOMING DO HEREBY CERTIFY THAT THIS MAP WAS PREPARED FROM THE
 VADEER SUBDIVISION PLAT RECORDED IN PLAT CABINET I AT PAGE 83 UNDER
 DOCUMENT NO. 2006-1748, THAT THIS MAP SHOWS THE PARTIAL VACATION OF
 VIKING DRIVE AND CORRECTS THE SPONGEUS DISTANCE OF 480.85' ALONG THE
 WEST LINE OF LOT 6 AS SHOWN ON THE ORIGINAL SUBDIVISION PLAT.

WYOMING L.S. REGISTRATION NO. 10014



<p>1402 Starpede Avenue Cody, WY 82414 Phone: 307.587.6281 Fax: 307.587.6282</p> <p>© 2017 MORRISON MAIERLE, INC. 2017</p>	<p>DRAWN BY: REB CHECKED BY: BOF APPR. BY: PMB DATE: 09/20/16</p>	<p>RECORD OF SURVEY PARTIAL VACATION OF VIKING DRIVE WITHIN VADEER SUBDIVISION WITHIN PARK COUNTY, WYOMING</p>	<p>PROJECT NO. 3478.007</p> <p>SHEET NUMBER 1 of 1</p>
	<p>J:\JURIS\2004\04-2007\Wyo Drive Partial Vacation PLAT.plt Plotted on Jan 16, 2017</p>		