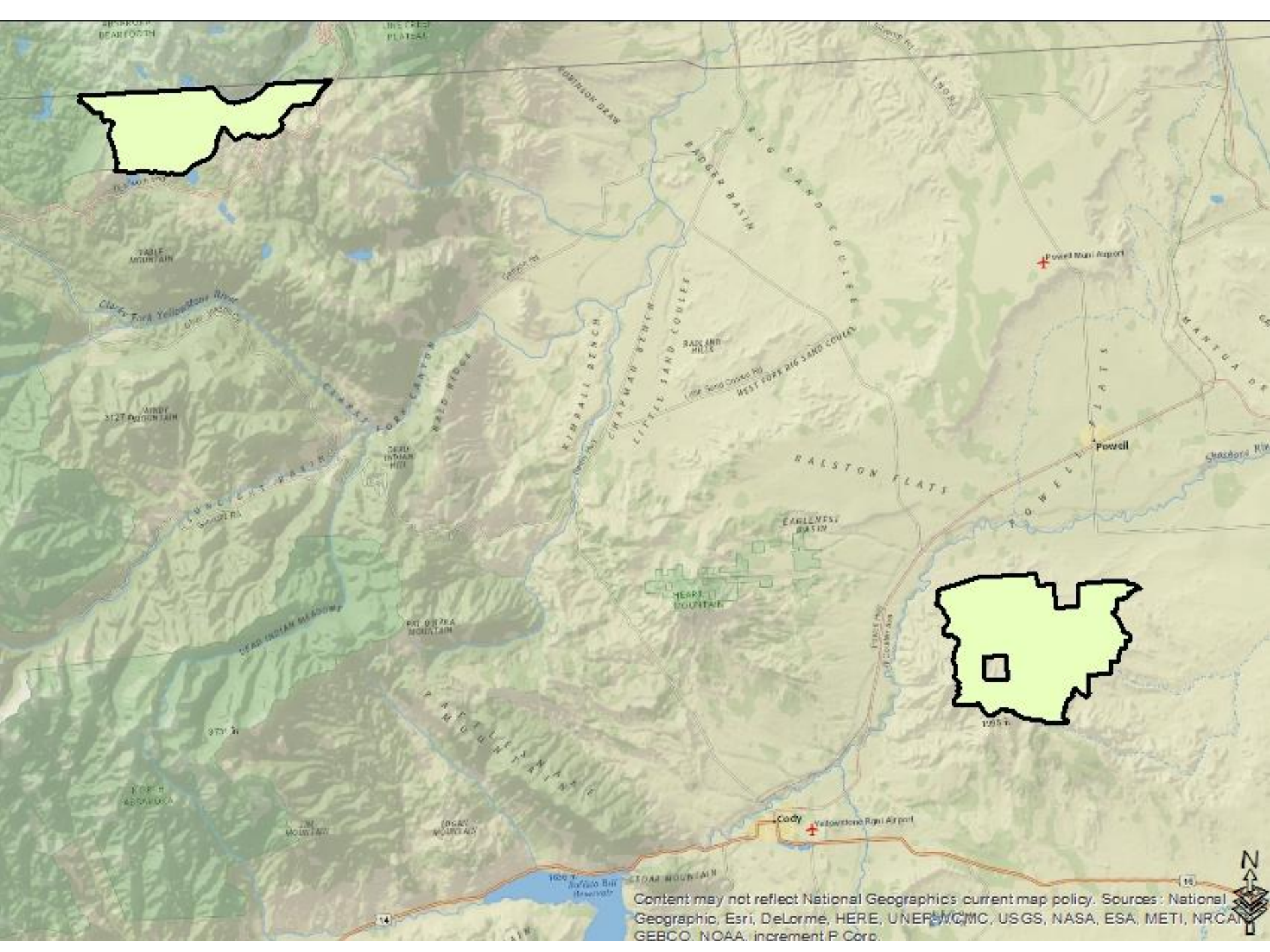


# Wyoming Public Lands Initiative Wilderness Study Areas

Wyoming Game and Fish Department

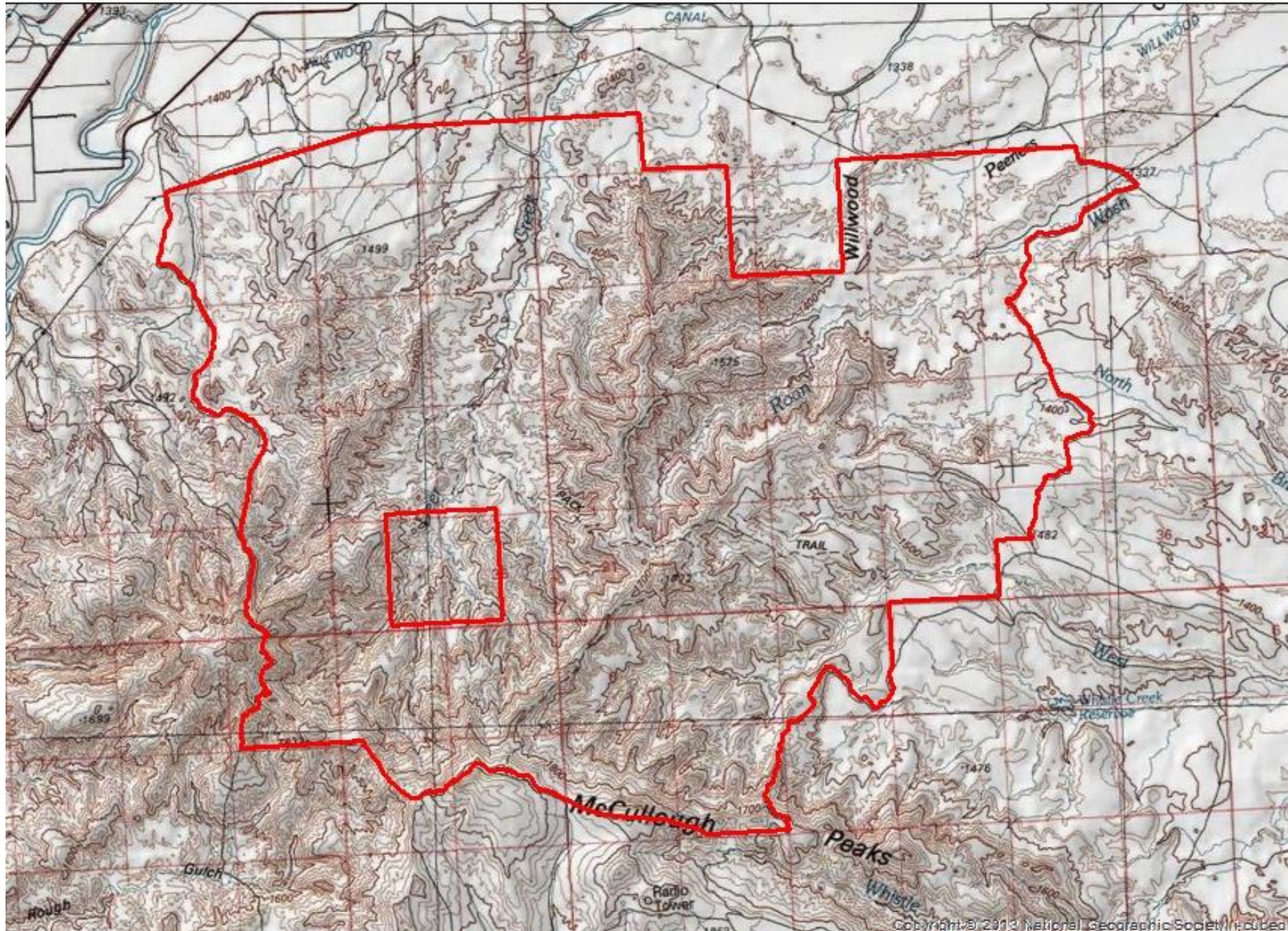


Content may not reflect National Geographic's current map policy. Sources: National Geographic, Esri, DeLorme, HERE, UNER, VCMC, USGS, NASA, ESA, METI, NRC, GEBCO, NOAA, increment P Corp.



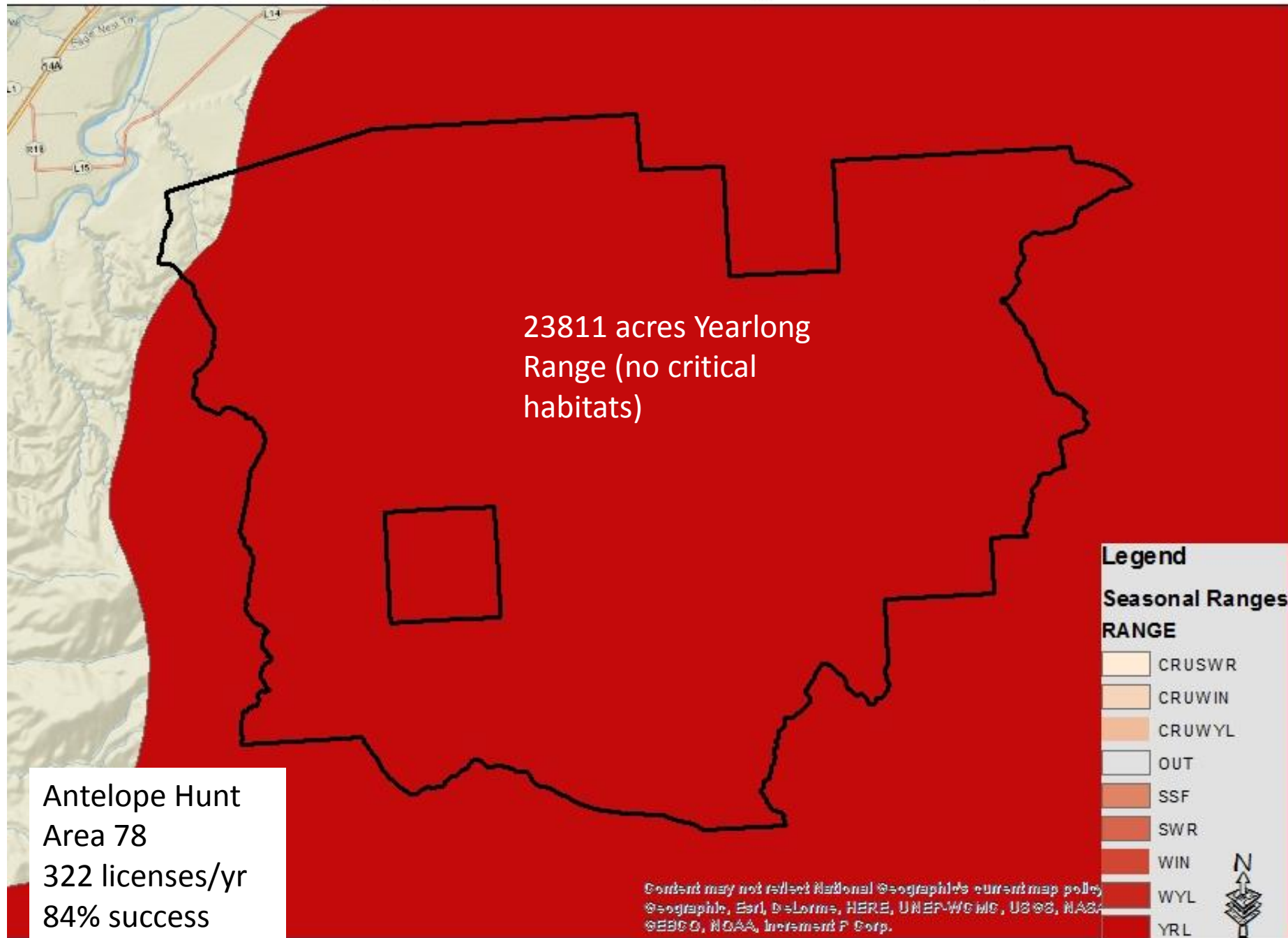
# McCullough Peaks WSA

24095 acres

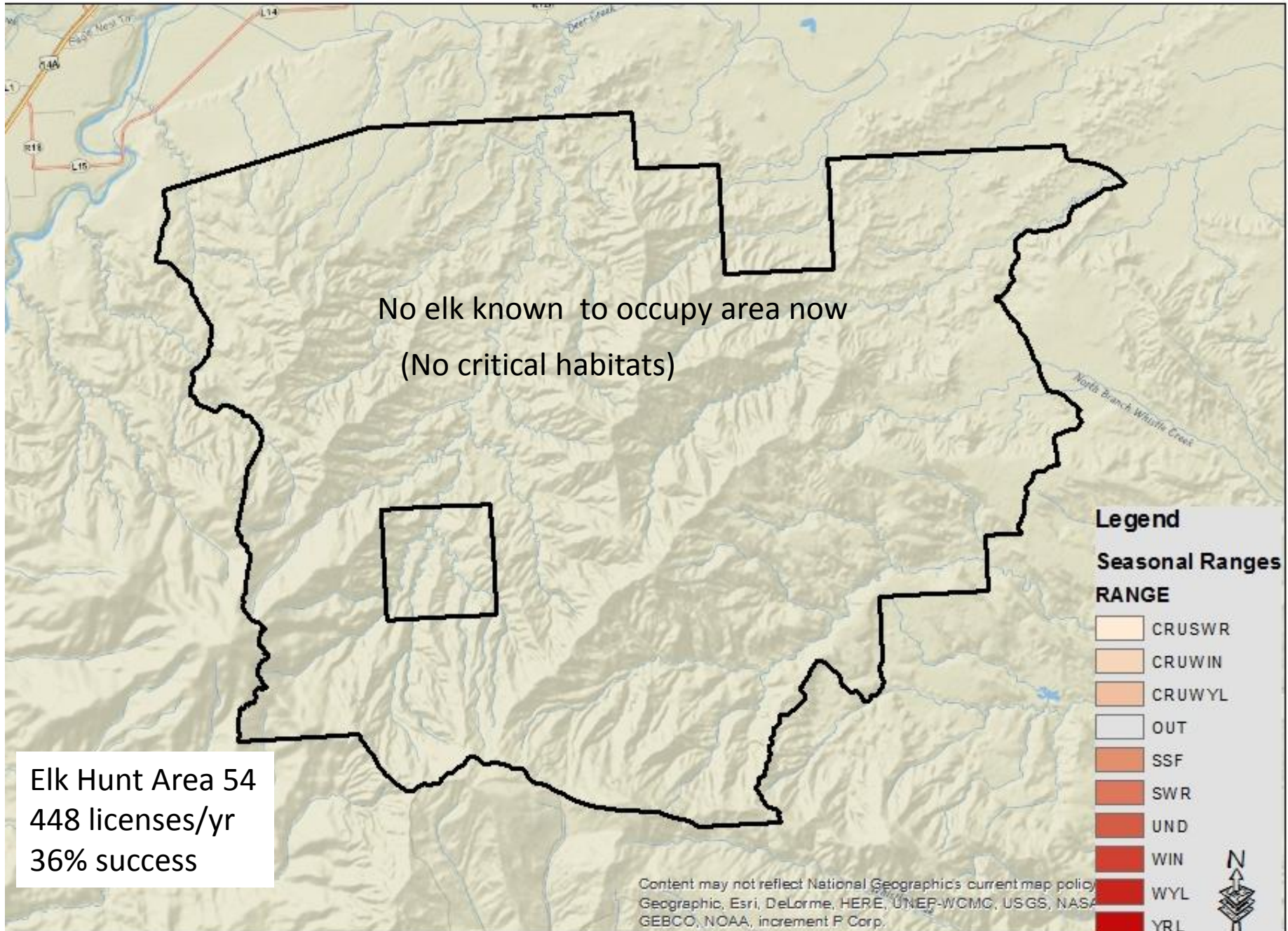




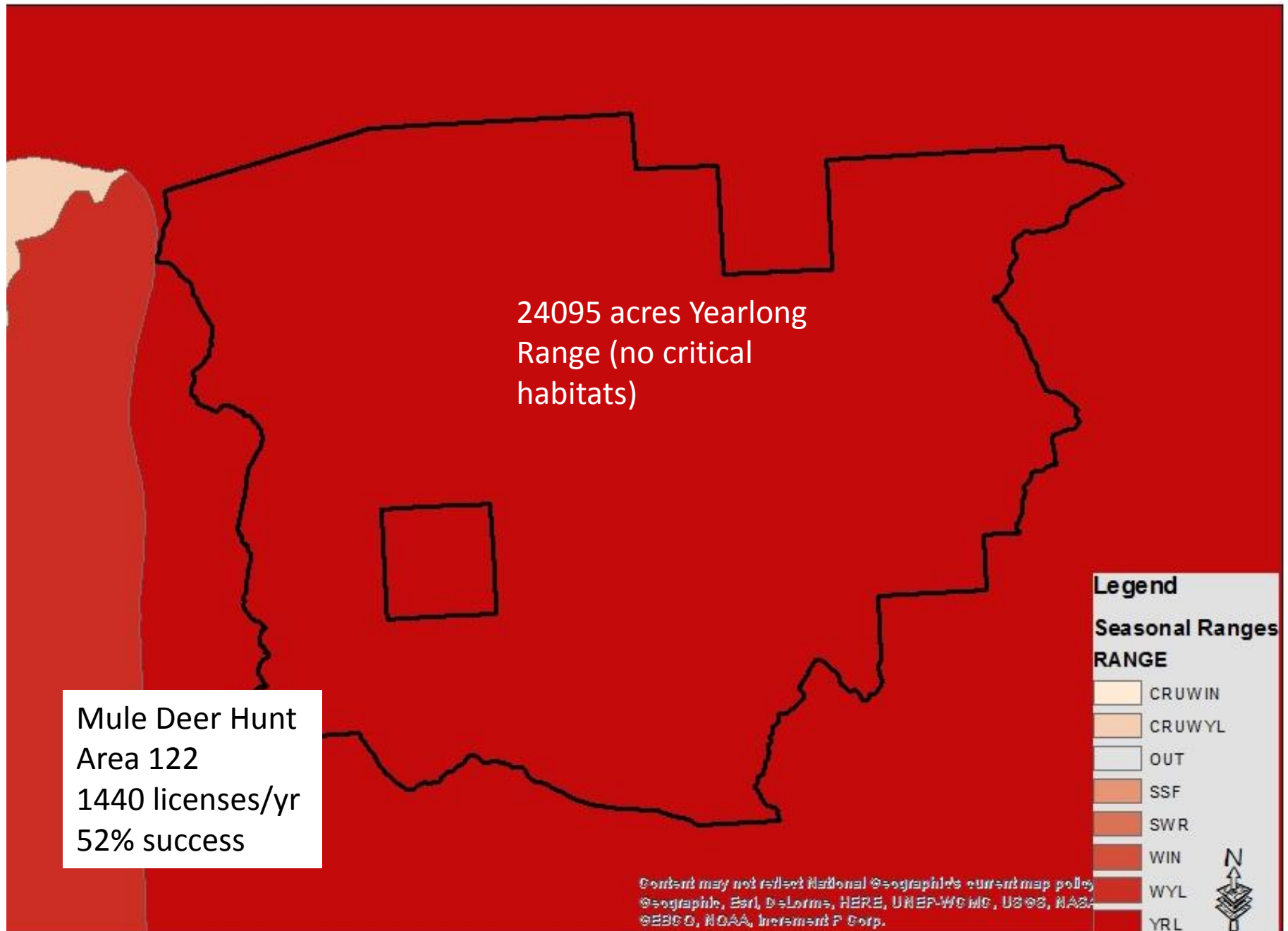
# McCullough Peaks WSA-- Pronghorn Antelope 78



# McCullough Peaks WSA-- Elk 54



# McCullough Peaks WSA-- Mule Deer 122





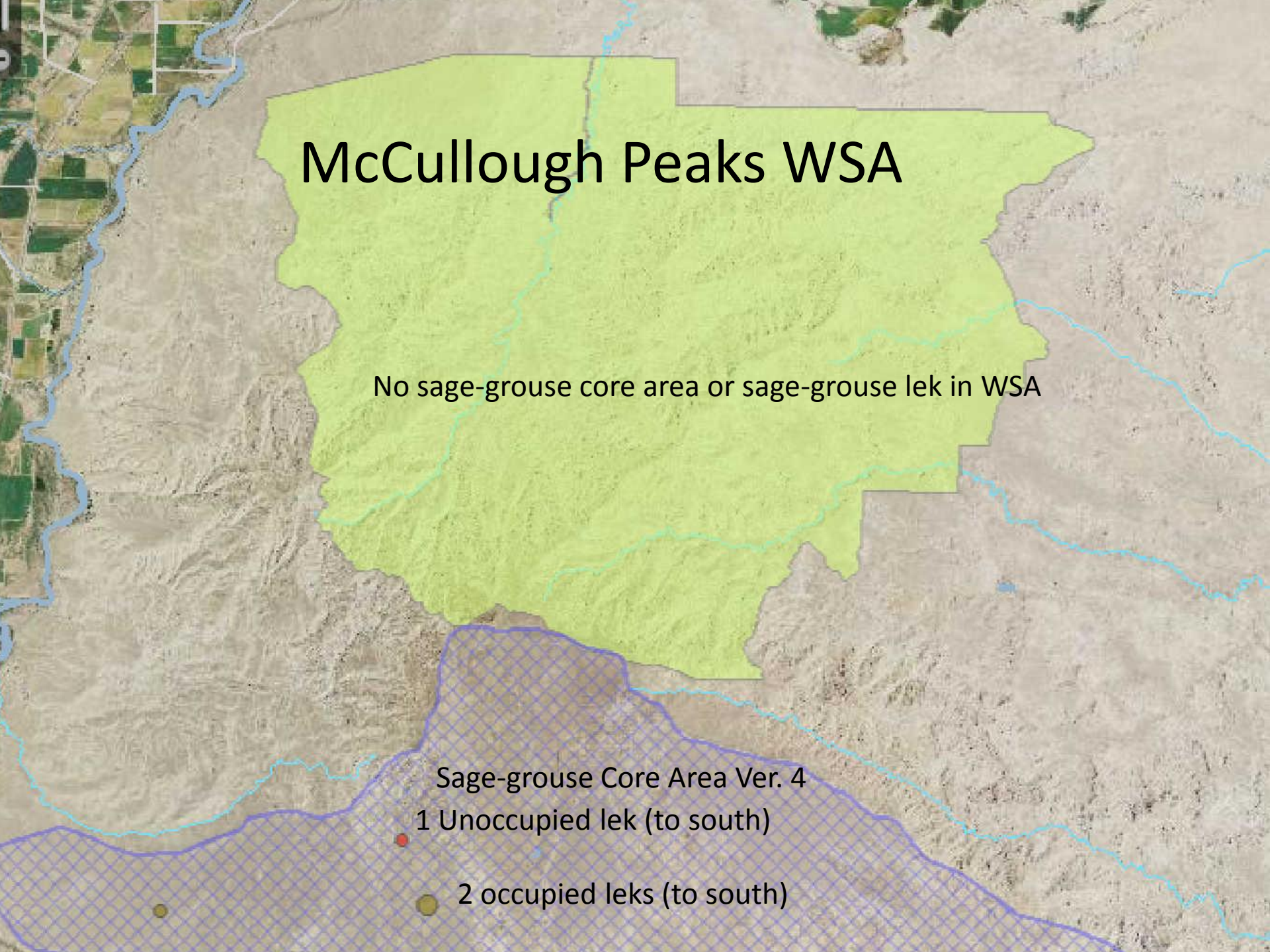
# McCullough Peaks WSA

No sage-grouse core area or sage-grouse lek in WSA

Sage-grouse Core Area Ver. 4

1 Unoccupied lek (to south)

2 occupied leks (to south)



ot	distri	obs_date	species_common	species_scientific	utm_zone	utm_east	utm_north	datum
#	Non	6/20/1983	GULL, RING-BILLED	LARUS DELAWARENSIS	12	666043.3	4947088	NAD-83
#	Cod	7/4/2007	PELICAN, AMERICAN WHITE	PELECANUS ERYTHRORHYNCHOS	12	665600	4948600	NAD-83
#	Cod	1/5/1989	MERGANSER, COMMON	MERGUS MERGANSER	12	666043.3	4947088	NAD-83
#	Cod	1/5/2008	DUCK, MALLARD	ANAS PLATYRHYNCHOS	12	664850	4947800	NAD-83
#	Cod	11/14/1998	DUCK, MALLARD	ANAS PLATYRHYNCHOS	12	665040.7	4948084	NAD-83
#	Cod	1/5/1989	DUCK, MALLARD	ANAS PLATYRHYNCHOS	12	666043.3	4947088	NAD-83
#	Cod	1/9/1990	DUCK, MALLARD	ANAS PLATYRHYNCHOS	12	666043.3	4947088	NAD-83
#	Cod	1/4/2008	WIGEON, AMERICAN	ANAS AMERICANA	12	664850	4947800	NAD-83
#	Cod	1/5/2008	DUCK, RING-NECKED	AYTHYA COLLARIS	12	664850	4947800	NAD-83
#	Cod	1/4/2008	GOLDENEYE, COMMON	BUCEPHALA CLANGULA	12	664850	4947800	NAD-83
#	Cod	5/13/1978	GOOSE, CANADA	BRANTA CANADENSIS	12	665615.6	4948300	NAD-83
#	Cod	1/5/1989	GOOSE, CANADA	BRANTA CANADENSIS	12	666043.3	4947088	NAD-83
#	Cod	12/16/1995	GOOSE, CANADA	BRANTA CANADENSIS	12	666428.3	4947543	NAD-83
#	Non	6/20/1983	HERON, GREAT BLUE	ARDEA HERODIAS	12	666043.3	4947088	NAD-83
#	Non	6/20/1983	KILLDEER	CHARADRIUS VOCIFERUS	12	666043.3	4947088	NAD-83
#	Cod	9/4/2004	PARTRIDGE, GRAY	PERDIX PERDIX	12	670762.6	4940734	NAD-83
#	Cod	11/27/1968	CHUKAR	ALECTORIS CHUKAR	12	664497.2	4945493	NAD-83
#	Cod	11/21/1968	CHUKAR	ALECTORIS CHUKAR	12	664497.2	4945493	NAD-83
#	Cod	1/9/1968	CHUKAR	ALECTORIS CHUKAR	12	664822.9	4948280	NAD-83
#	Cod	12/18/1967	CHUKAR	ALECTORIS CHUKAR	12	664842.7	4947502	NAD-83
#	Cod	12/11/1967	CHUKAR	ALECTORIS CHUKAR	12	664842.7	4947502	NAD-83
#	Cod	12/18/1967	CHUKAR	ALECTORIS CHUKAR	12	664842.7	4947502	NAD-83
#	Cod	8/13/1970	CHUKAR	ALECTORIS CHUKAR	12	664862.5	4946725	NAD-83
#	Cod	10/31/1969	CHUKAR	ALECTORIS CHUKAR	12	665615.6	4948300	NAD-83
#	Cod	12/15/1970	CHUKAR	ALECTORIS CHUKAR	12	665615.6	4948300	NAD-83
#	Cod	12/18/2012	CHUKAR	ALECTORIS CHUKAR	12	670624	4944647	NAD-83
#	Cod	1/10/1981	GROUSE, GREATER SAGE-	CENTROCERCUS UROPHASIANUS	12	666043.3	4947088	NAD-83
#	Cod	11/10/1983	GROUSE, GREATER SAGE-	CENTROCERCUS UROPHASIANUS	12	667796.2	4940687	NAD-83
#	Non	7/2/1983	PIGEON, ROCK	COLUMBA LIVIA	12	666043.3	4947088	NAD-83
#	Non	7/2/1983	PIGEON, ROCK	COLUMBA LIVIA	12	666043.3	4947088	NAD-83
#	Non	6/20/1983	PIGEON, ROCK	COLUMBA LIVIA	12	666043.3	4947088	NAD-83
#	Non	6/20/1983	PIGEON, ROCK	COLUMBA LIVIA	12	666043.3	4947088	NAD-83
#	Non	6/20/1983	PIGEON, ROCK	COLUMBA LIVIA	12	666043.3	4947088	NAD-83
#	Non	6/20/1983	PIGEON, ROCK	COLUMBA LIVIA	12	666043.3	4947088	NAD-83
#	Non	7/2/1983	DOVE, MOURNING	ZENaida MACROURA	12	666043.3	4947088	NAD-83
#	Non	7/2/1983	DOVE, MOURNING	ZENaida MACROURA	12	666043.3	4947088	NAD-83
#	Non	6/20/1983	DOVE, MOURNING	ZENaida MACROURA	12	666043.3	4947088	NAD-83
#	Non	6/20/1983	DOVE, MOURNING	ZENaida MACROURA	12	666043.3	4947088	NAD-83
#	Cod	1/6/1996	HARRIER, NORTHERN	CIRCUS CYANEUS	12	664842.7	4947502	NAD-83
#	Cod	2/27/2016	HAWK, SHARP-SHINNED	ACCIPITER STRIATUS	12	665704	4948497	NAD-83



# Non	4/7/1989	EAGLE, GOLDEN	AQUILA CHRYSAETOS	12	665038.1	4946062	NAD-83
# Cod	6/19/1983	EAGLE, GOLDEN	AQUILA CHRYSAETOS	12	665038.1	4946062	NAD-83
# Cod	1/9/1981	EAGLE, GOLDEN	AQUILA CHRYSAETOS	12	666043.3	4947088	NAD-83
# Non	5/25/1982	EAGLE, GOLDEN	AQUILA CHRYSAETOS	12	674670.5	4947872	NAD-83
# Non	11/30/1988	EAGLE, BALD	HALIAEETUS LEUCOCEPHALUS	12	664987.1	4948062	NAD-83
# Non	6/1/1982	FALCON, PRAIRIE	FALCO MEXICANUS	12	666227.6	4946093	NAD-83
# Non	4/7/1989	FALCON, PRAIRIE	FALCO MEXICANUS	12	666227.6	4946093	NAD-83
# Cod	1/6/1996	KESTREL, AMERICAN	FALCO SPARVERIUS	12	664842.7	4947502	NAD-83
# Non	6/20/1983	KINGBIRD, EASTERN	TYRANNUS TYRANNUS	12	666043.3	4947088	NAD-83
# Non	6/20/1983	FLYCATCHER, CORDILLERAN	EMPIDONAX OCCIDENTALIS	12	666043.3	4947088	NAD-83
# Non	7/2/1983	STARLING, EUROPEAN	STURNUS VULGARIS	12	666043.3	4947088	NAD-83
# Non	6/20/1983	STARLING, EUROPEAN	STURNUS VULGARIS	12	666043.3	4947088	NAD-83
# Non	7/2/1983	COWBIRD, BROWN-HEADED	MOLOTHRUS ATER	12	666043.3	4947088	NAD-83
# Non	7/2/1983	COWBIRD, BROWN-HEADED	MOLOTHRUS ATER	12	666043.3	4947088	NAD-83
# Non	6/20/1983	COWBIRD, BROWN-HEADED	MOLOTHRUS ATER	12	666043.3	4947088	NAD-83
# Non	7/2/1983	BLACKBIRD, RED-WINGED	AGELAIUS PHOENICEUS	12	666043.3	4947088	NAD-83
# Non	7/2/1983	BLACKBIRD, RED-WINGED	AGELAIUS PHOENICEUS	12	666043.3	4947088	NAD-83
# Non	7/2/1983	BLACKBIRD, RED-WINGED	AGELAIUS PHOENICEUS	12	666043.3	4947088	NAD-83
# Non	7/2/1983	BLACKBIRD, RED-WINGED	AGELAIUS PHOENICEUS	12	666043.3	4947088	NAD-83
# Non	7/2/1983	BLACKBIRD, RED-WINGED	AGELAIUS PHOENICEUS	12	666043.3	4947088	NAD-83
# Non	7/2/1983	BLACKBIRD, RED-WINGED	AGELAIUS PHOENICEUS	12	666043.3	4947088	NAD-83
# Non	6/20/1983	BLACKBIRD, RED-WINGED	AGELAIUS PHOENICEUS	12	666043.3	4947088	NAD-83
# Non	6/20/1983	BLACKBIRD, RED-WINGED	AGELAIUS PHOENICEUS	12	666043.3	4947088	NAD-83
# Non	6/20/1983	BLACKBIRD, RED-WINGED	AGELAIUS PHOENICEUS	12	666043.3	4947088	NAD-83
# Non	6/20/1983	BLACKBIRD, RED-WINGED	AGELAIUS PHOENICEUS	12	666043.3	4947088	NAD-83
# Non	6/20/1983	BLACKBIRD, RED-WINGED	AGELAIUS PHOENICEUS	12	666043.3	4947088	NAD-83
# Non	6/20/1983	BLACKBIRD, RED-WINGED	AGELAIUS PHOENICEUS	12	666043.3	4947088	NAD-83
# Non	6/20/1983	BLACKBIRD, RED-WINGED	AGELAIUS PHOENICEUS	12	666043.3	4947088	NAD-83
# Non	6/20/1983	BLACKBIRD, RED-WINGED	AGELAIUS PHOENICEUS	12	666043.3	4947088	NAD-83
# Non	6/20/1983	BLACKBIRD, RED-WINGED	AGELAIUS PHOENICEUS	12	666043.3	4947088	NAD-83
# Non	7/2/1983	BLACKBIRD, RED-WINGED	AGELAIUS PHOENICEUS	12	666043.3	4947088	NAD-83
# Non	7/2/1983	BLACKBIRD, RED-WINGED	AGELAIUS PHOENICEUS	12	666043.3	4947088	NAD-83
# Non	7/2/1983	BLACKBIRD, RED-WINGED	AGELAIUS PHOENICEUS	12	666043.3	4947088	NAD-83
# Non	6/20/1983	BLACKBIRD, RED-WINGED	AGELAIUS PHOENICEUS	12	666043.3	4947088	NAD-83
# Non	6/20/1983	BLACKBIRD, RED-WINGED	AGELAIUS PHOENICEUS	12	666043.3	4947088	NAD-83
# Non	6/20/1983	BLACKBIRD, RED-WINGED	AGELAIUS PHOENICEUS	12	666043.3	4947088	NAD-83
# Non	7/2/1983	MEADOWLARK, WESTERN	STURNELLA NEGLECTA	12	666043.3	4947088	NAD-83
# Non	6/20/1983	MEADOWLARK, WESTERN	STURNELLA NEGLECTA	12	666043.3	4947088	NAD-83
# Non	7/2/1983	BLACKBIRD, BREWER'S	EUPHAGUS CYANOCEPHALUS	12	666043.3	4947088	NAD-83
# Non	7/2/1983	BLACKBIRD, BREWER'S	EUPHAGUS CYANOCEPHALUS	12	666043.3	4947088	NAD-83
# Non	6/20/1983	BLACKBIRD, BREWER'S	EUPHAGUS CYANOCEPHALUS	12	666043.3	4947088	NAD-83
# Non	6/20/1983	BLACKBIRD, BREWER'S	EUPHAGUS CYANOCEPHALUS	12	666043.3	4947088	NAD-83
# Non	6/20/1983	BLACKBIRD, BREWER'S	EUPHAGUS CYANOCEPHALUS	12	666043.3	4947088	NAD-83
# Non	6/20/1983	BLACKBIRD, BREWER'S	EUPHAGUS CYANOCEPHALUS	12	666043.3	4947088	NAD-83





# Non	7/2/1983	SWALLOW, CLIFF	PETROCHELIDON PYRRHONOTA	12	666043.3	4947088	NAD-83
# Non	7/2/1983	SWALLOW, CLIFF	PETROCHELIDON PYRRHONOTA	12	666043.3	4947088	NAD-83
# Non	7/2/1983	SWALLOW, CLIFF	PETROCHELIDON PYRRHONOTA	12	666043.3	4947088	NAD-83
# Non	7/2/1983	SWALLOW, CLIFF	PETROCHELIDON PYRRHONOTA	12	666043.3	4947088	NAD-83
# Non	7/2/1983	SWALLOW, CLIFF	PETROCHELIDON PYRRHONOTA	12	666043.3	4947088	NAD-83
# Non	6/20/1983	SWALLOW, BARN	HIRUNDO RUSTICA	12	666043.3	4947088	NAD-83
# Non	6/20/1983	SWALLOW, TREE	TACHYCNETA BICOLOR	12	666043.3	4947088	NAD-83
# Non	6/20/1983	SWALLOW, VIOLET-GREEN	TACHYCNETA THALASSINA	12	666043.3	4947088	NAD-83
# Non	6/20/1983	SWALLOW, VIOLET-GREEN	TACHYCNETA THALASSINA	12	666043.3	4947088	NAD-83
# Non	6/20/1983	SWALLOW, VIOLET-GREEN	TACHYCNETA THALASSINA	12	666043.3	4947088	NAD-83
# Non	6/20/1983	SWALLOW, VIOLET-GREEN	TACHYCNETA THALASSINA	12	666043.3	4947088	NAD-83
# Non	7/2/1983	WARBLER, YELLOW	DENDROICA PETECHIA	12	666043.3	4947088	NAD-83
# Non	7/2/1983	WARBLER, YELLOW	DENDROICA PETECHIA	12	666043.3	4947088	NAD-83
# Non	7/2/1983	WARBLER, YELLOW	DENDROICA PETECHIA	12	666043.3	4947088	NAD-83
# Non	7/2/1983	WARBLER, YELLOW	DENDROICA PETECHIA	12	666043.3	4947088	NAD-83
# Non	6/20/1983	WARBLER, YELLOW	DENDROICA PETECHIA	12	666043.3	4947088	NAD-83
# Non	6/20/1983	WARBLER, YELLOW	DENDROICA PETECHIA	12	666043.3	4947088	NAD-83
# Non	6/20/1983	WARBLER, YELLOW	DENDROICA PETECHIA	12	666043.3	4947088	NAD-83
# Non	6/20/1983	WARBLER, YELLOW	DENDROICA PETECHIA	12	666043.3	4947088	NAD-83
# Non	6/20/1983	WARBLER, YELLOW	DENDROICA PETECHIA	12	666043.3	4947088	NAD-83
# Non	6/20/1983	CHAT, YELLOW-BREASTED	ICTERIA VIRENS	12	666043.3	4947088	NAD-83
# Non	6/20/1983	CHAT, YELLOW-BREASTED	ICTERIA VIRENS	12	666043.3	4947088	NAD-83
# Non	7/2/1983	CHICKADEE, BLACK-CAPPED	POECILE ATRICAPILLUS	12	666043.3	4947088	NAD-83
# Cod	6/27/1980	COTTONTAIL, DESERT	SYLVILAGUS AUDUBONII	12	666043.3	4947088	NAD-83
# Cod	1/15/2006	MUSKRAT	ONDATRA ZIBETHICUS	12	665744	4948380	NAD-83
# Cod	1/12/1987	COYOTE	CANIS LATRANS	12	666043.3	4947088	NAD-83
# Cod	8/1/1981	FOX, RED	VULPES VULPES	12	666043.3	4947088	NAD-83
# Cod	12/7/1987	BOBCAT	LYNX RUFUS	12	670920.9	4945659	NAD-83
# Cod	11/24/1983	BOBCAT	LYNX RUFUS	12	672507	4945701	NAD-83
# Cod	11/27/1983	BOBCAT	LYNX RUFUS	12	672507	4945701	NAD-83